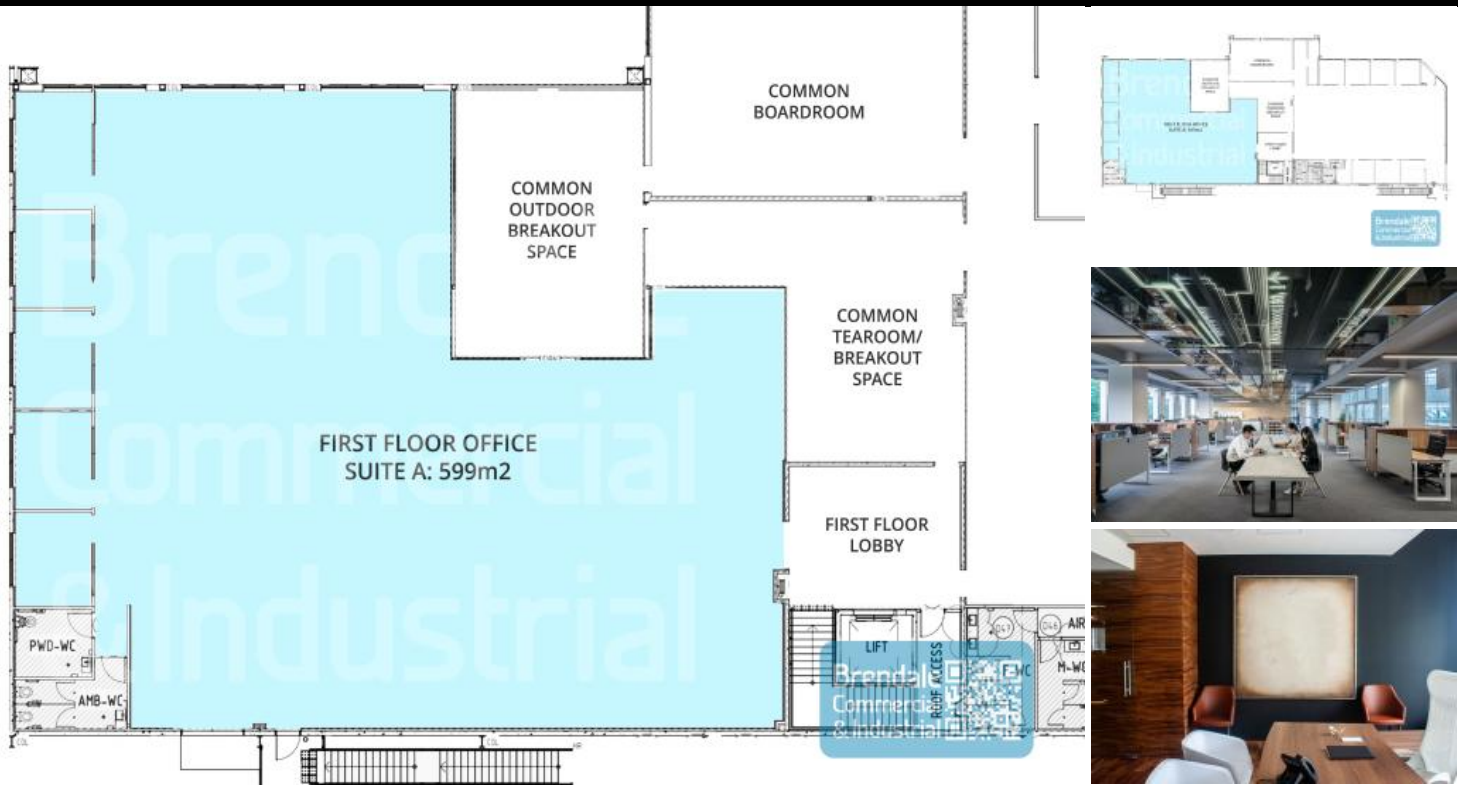


Brendale Commercial & Industrial



BRENDALE

599M2 OFFICE OR MEDICAL SUITE

- 599m office or medical suite
- First floor office space
- Modern construction with new fitout
- Clean open plan office space
- 5 managers offices
- Lift access
- Located on main road
- Main road frontage
- Shared amenities
- Shared modern kitchenette/breakout
- Shared outdoor breakout space
- Shared boardroom & business amenities
- Good signage opportunities
- Located in the heart of Brendale
- 20 radial kilometers to Brisbane CBD
- Strategic Northside location
- Good access to Airport Precinct, Sunshine Coast & Gold Coast via Bruce Hwy & Gateway Motorway
- Need more space? up to 1,312m2 available for lease.

For more information or to arrange an inspection please call THE EXCLUSIVE AGENT Stan Topp of Brendale Commercial & Industrial

The Phone Code for this property is: 1914. Please quote this number when phoning or texting.

Please Note: Commercial sales prices are excluding GST. Commercial lease prices are per annum + outgoings + GST. All sizes are approximate.

Lease

Floor Area
Suburb
Property ID

Contact

Agent

599
Brendale
1914

AGENT DETAILS



STAN TOPP

☎ 0416 114 215

stan@brendalecommercial.com.au