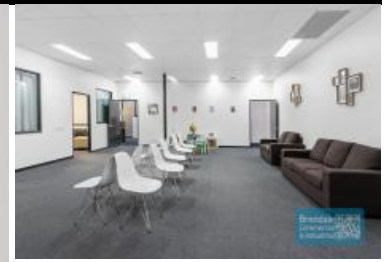


Brendale Commercial & Industrial



STRATHPINE

271M2 OFFICE/ MEDICAL SUITE

- 271m2 office or medical suite
- Air conditioned office
- Office fitout included
- Managers offices included
- Clean open plan office area
- Reception area
- Floor coverings included
- Meeting area
- First floor office
- Large windows
- Private kitchenette
- Shared amenities
- Ample onsite parking
- Parking at rear
- Strategic Northside location
- Moreton Bay Regional council is the second fastest growing area in Australia

For more information or to arrange an inspection please call Stan Topp of Brendale Commercial & Industrial

The Phone Code for this property is: 1896. Please quote this number when phoning or texting.

Please Note: Commercial sales prices are excluding GST. Commercial lease prices are per annum + outgoings + GST. All sizes are approximate.

Lease

Floor Area
Suburb
Property ID

Contact

Agent

271
Strathpine
1896

AGENT DETAILS



STAN TOPP

☎ 0416 114 215

stan@brendalecommercial.com.au