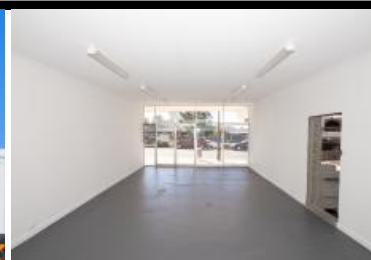


Brendale Commercial & Industrial



STRATHPINE

514-516 Gympie Rd

106M2 MAIN RD OFFICE OR RETAIL SHOP

EXCLUSIVE AGENCY

- 106m2 retail shop
- Ideal office or retail shop
- Price includes outgoings
- Large windows
- Excellent exposure
- Main road frontage
- Ample onsite parking
- Well priced to suit the market
- Airconditioned
- Shop front access
- Glass display shop front
- Good signage opportunities
- Signage to main road
- Strategic Northside location
- Moreton Bay Regional council is the second fastest growing area in Australia
- Need a smaller space? Alternative sizes are available

For more information or to arrange an inspection please call THE EXCLUSIVE AGENTS Bill Mcilwraith or Ash Morris of Brendale Commercial & Industrial

NB: Commercial sales prices are excluding GST. Commercial lease prices are per annum + outgoings + GST. All sizes are approximate.

Lease

Floor Area

Suburb

Address

Property ID

LEASED

106

Strathpine

514-516 Gympie Rd

1384

AGENT DETAILS



BILL MCILWRAITH

☎ 07 3205 3000

stan@brendalecommercial.com.au