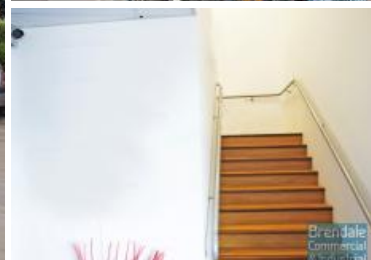
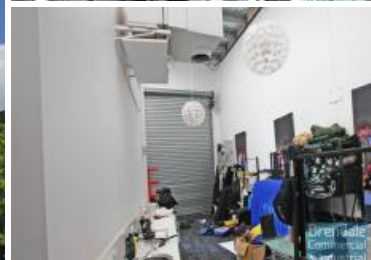


Brendale Commercial & Industrial



BANYO

Unit 12/ 459 Tufnell Rd

228M2 INDUSTRIAL UNIT WITH OFFICE

EXCLUSIVE AGENCY

- 228m2 total space
- Well maintained
- Tilt panel construction
- Modern complex
- 83m2 office area
- 145m2 warehouse space
- Air conditioned office
- Professional office
- Clean open plan office area
- First floor office
- Large windows
- Reception area
- Private kitchenette
- Lunch room area
- Separate male & female toilets
- Access from main road
- Dual driveway access
- Located near shops & business services
- Located in busy complex
- Roller door access
- Ample onsite parking
- Electric roller door
- Well priced to suit the market
- Natural light in warehouse
- High bay lighting
- Good internal racking height
- Strategic Northside location

For more information or to arrange an inspection please call THE EXCLUSIVE AGENTS Stan Topp or Bill Mcilwraith of Brendale Commercial & Industrial

NB: Commercial sales prices are excluding GST. Commercial lease prices are per annum + outgoings + GST. All sizes are approximate.

Lease

Floor Area

228

Suburb

Banyo

Address

Unit 12/ 459 Tufnell Rd

Property ID

1276

LEASED

AGENT DETAILS



BILL MCILWRAITH

☎ 07 3205 3000

stan@brendalecommercial.com.au



STAN TOPP

☎ 0416 114 215

stan@brendalecommercial.com.au